



Strathclyde Business Centre, 391 Langlands Road, Glasgow G69 7TU Tel: 01236 872810 Email:sales@scaledirect.co.uk

## OnAveragePlus

Average Quantity Software for Trading Standards with over 250 users throughout the UK

## Introduction

OnAverageplus was previously designed by Wattsoft Ltd and makes use of the user friendly interface provided with Microsoft Windows™ environment. The software is designed to assist Trading Standards Officers determine if the packer is conforming to the up dated 2006 Packaged Goods Regulations.

The software has been designed to be flexible in operation and easy to use.

Additional Modules extend the functions provided to including the monitoring of unique sections of the Regulations such as Measuring Container Bottles and Bread.

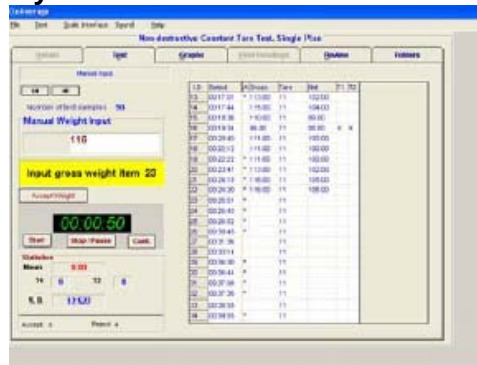
The 12 modules within the software comprise follow a drop down menu and by using the mouse, pad, touch screen on a laptop the user selects the required test.

The tests comprise:

Destructive Test  
Non-Destructive Test  
Screen Testing  
Test for Constant Tare  
Warehouse Unpack

The system allows for the saving of the data in an encrypted format as well as the facility to EXPORT the data

## Typical screen layout



Destructive test can be;

Immediate  
No Tare  
Deferred

The Non-Destructive testing can be

Variable Tare Single Plan  
Variable Tare Double Plan  
Constant Tare Single Plan  
Constant Tare Double Plan

The Screen Test can be

Constant Tare  
Variable Tare

As you can see from the screen a weighing device is desirable however the values can be manually entered to achieve the same results.

Scale Direct (Scotland) Ltd can supply a full and extensive range services including software, balances, carry cases, batteries and can link to a large range of manufacturers equipment

The software is available for Windows 2000, XP, Vista, 7, and the results are compatible with previous versions of Wattsoft